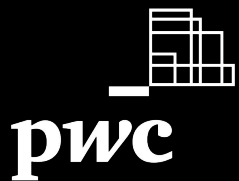


Pioneering in Cyber Risk Management

Automated Controls Monitoring Powered by OSCAL

November 2023



Presenters



Tom Nash
PwC | OSCAL Lead

+44 (0) 7483 378370
thomas.nash@pwc.com



Sivaram Mallampati
PwC | Product Owner

+44 (0) 748 345 2570
sivaram.x.mallampati@pwc.com



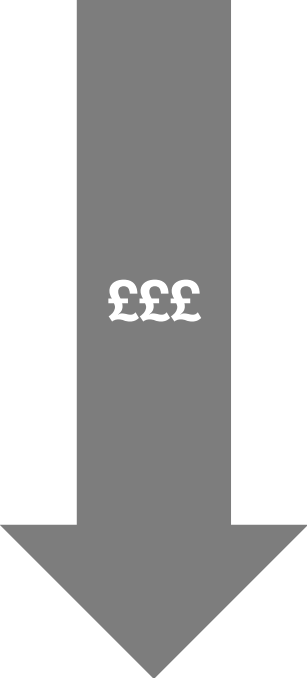
Joshua Kong
PwC | DevOps Engineer

+44 (0) 748 333 7329
joshua.kong@pwc.com

Automated controls monitoring...

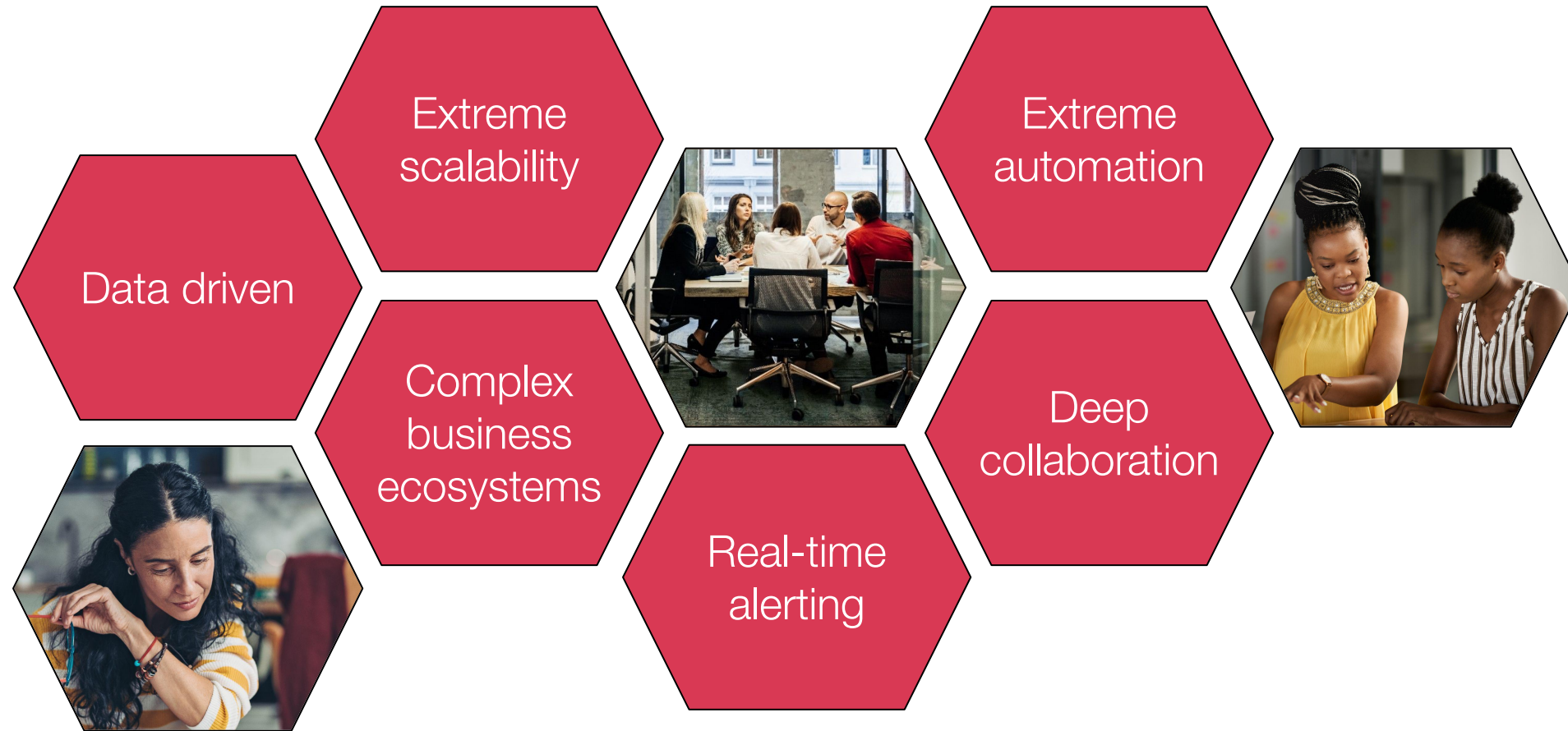


**Reduces cost
of compliance**



**Reduces
potential cost of
non-compliance**

The future of risk management...



... hinges off a common language of risk

Key commercial sector use cases supported by OSCAL



Compliance



Cloud security



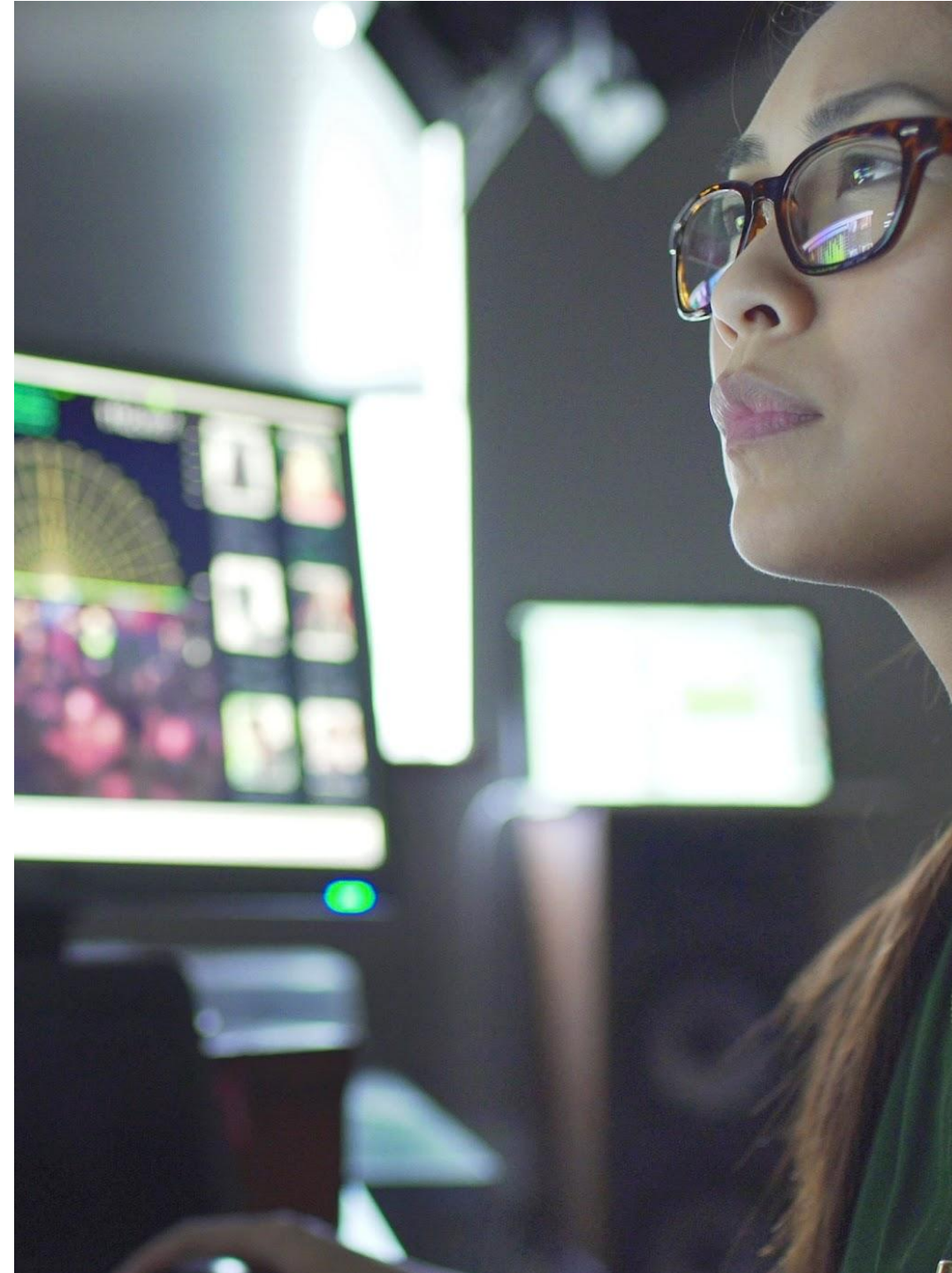
Cyber insurance



Third party security



Group posture monitoring



Key personas impacted by OSCAL

Persona	Value driver
Executive	Real-time reporting
Engineer	Machine-readable control instructions
GRC analyst	Product level compliance insights
Product owner	Requirements baseline
Insurer/Regulator	Standardised compliance reporting

PwC capability overview

PwC has built an OSCAL powered model that codifies risk management processes and enables the following...

#	Capability	Value
1	Describe security control information in machine-readable format	<ul style="list-style-type: none">• Codify your risk management processes and save hundreds of hours of assessors time
2	Run on-demand security assessments	<ul style="list-style-type: none">• Zero marginal cost of assessment
3	Auto-validate security controls adherence	<ul style="list-style-type: none">• Shift security left in the software product development lifecycle and save operational costs
4	Auto-generate system security plans	<ul style="list-style-type: none">• Scale the production of application-level and enterprise-level compliance reports that can be shared with trusted third parties
5	Auto-remediate policy deviations	<ul style="list-style-type: none">• Detect misconfigurations and reduce time to resolution

Demo

In the demo you will see...



Architecture



Pipeline



GRC GUI



OSCAL schema files

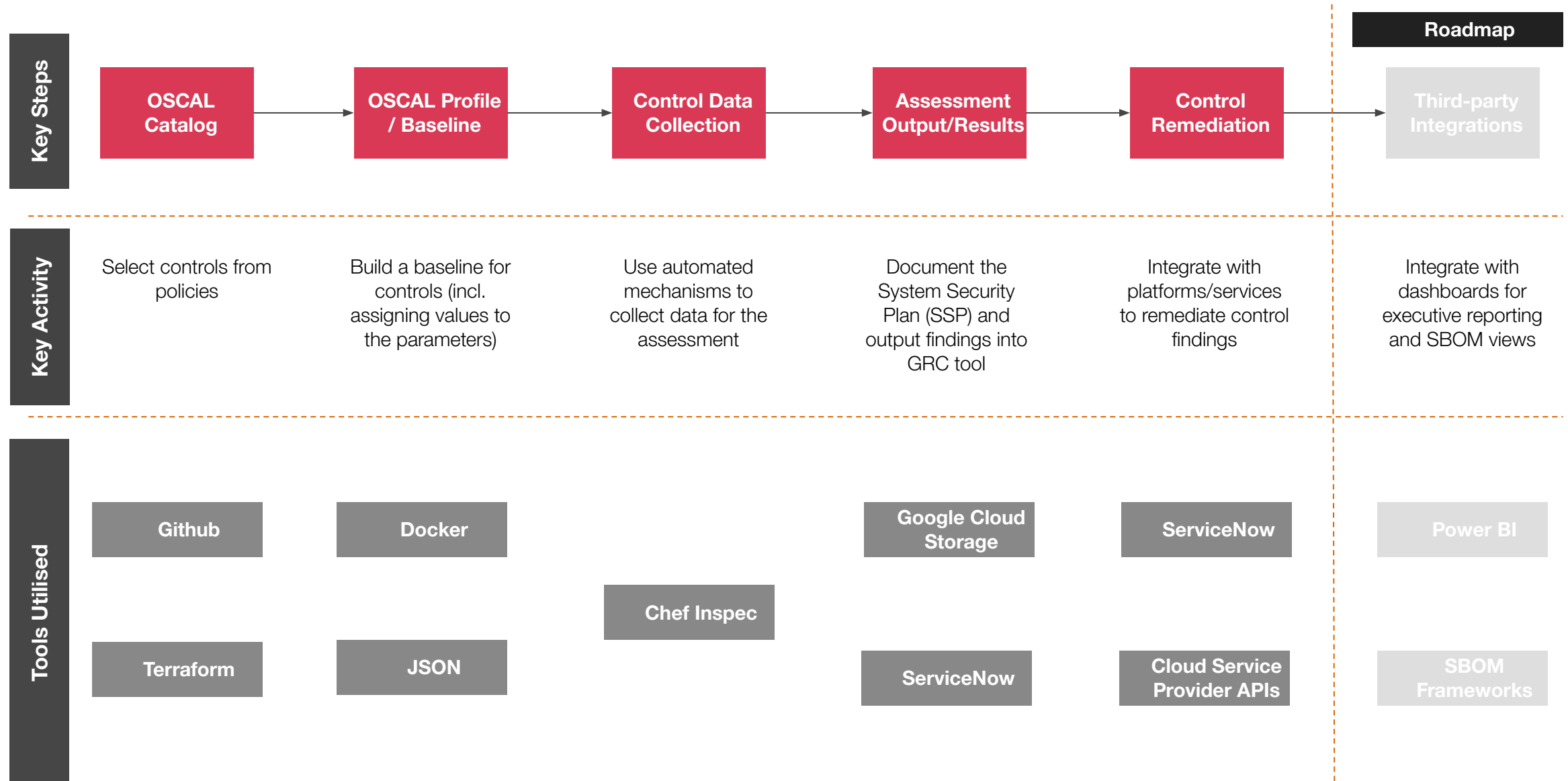


Remediation

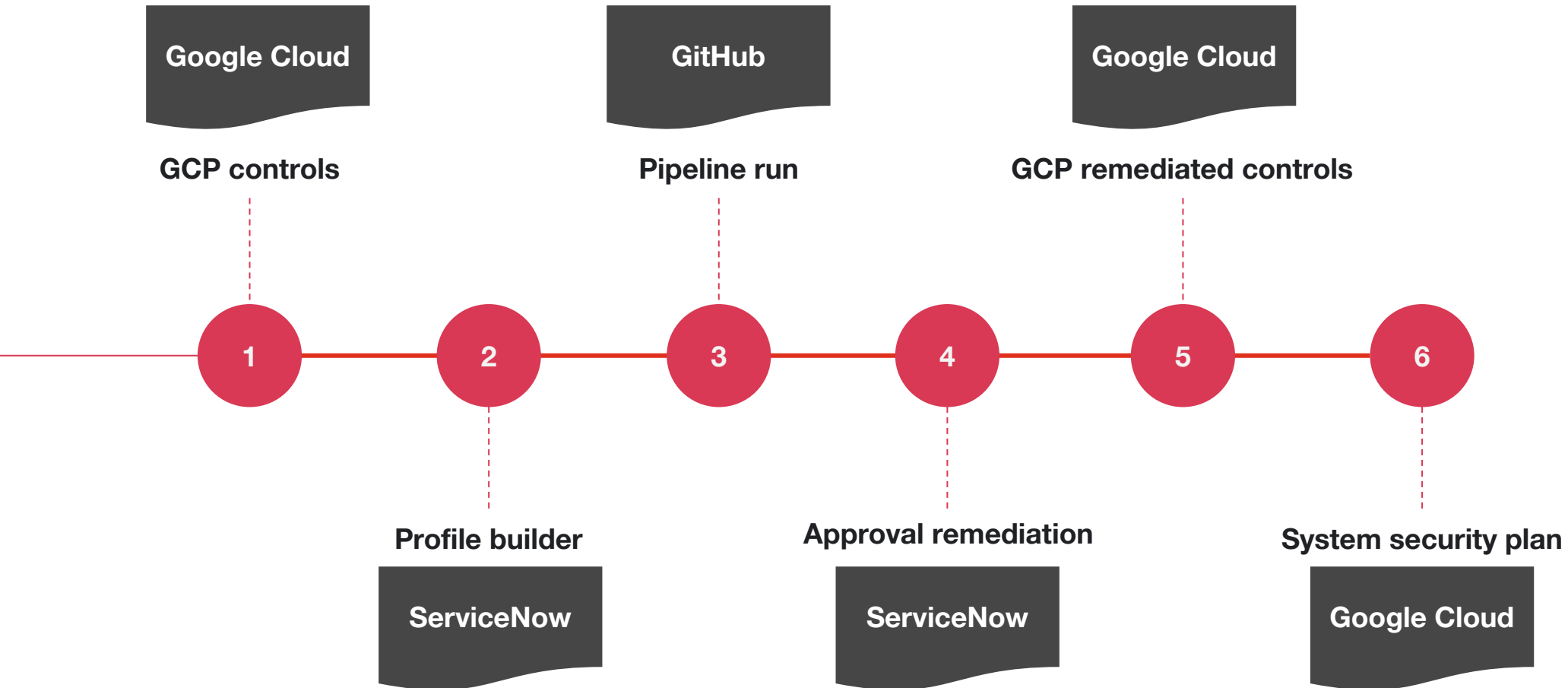
Key features:

- ✓ Environment agnostic
- ✓ Reporting can be shared with trusted third parties
- ✓ Enables risk aggregation within the GRC tool
- ✓ Supports control inheritance
- ✓ Powers automation and data-centricity

Solution conceptual architecture



Demo workflow



Thank you

[pwc.com](https://www.pwc.com)

Confidential. This document is provided for the purposes of your discussions with PricewaterhouseCoopers LLP. This document, and extracts from it and the ideas contained within it, may not be used for any other purpose and may not be disclosed to any third parties. This document does not constitute a proposal or contract of engagement with PricewaterhouseCoopers LLP, and is subject to the terms of any subsequent engagement contract that may be entered into between us.

© 2023 PricewaterhouseCoopers LLP. All rights reserved. 'PwC' refers to the UK member firm, and may sometimes refer to the PwC network. Each member firm is a separate legal entity. Please see www.pwc.com/structure for further details.